

SmartPost™ / SmartStake™ Fence Installation Instructions

Thank You for Purchasing The SmartPole™ System!

All components shown are included ONLY with Complete Fence Kits

* U.S. Patent #6,149,135

Complete Fence Kit Components

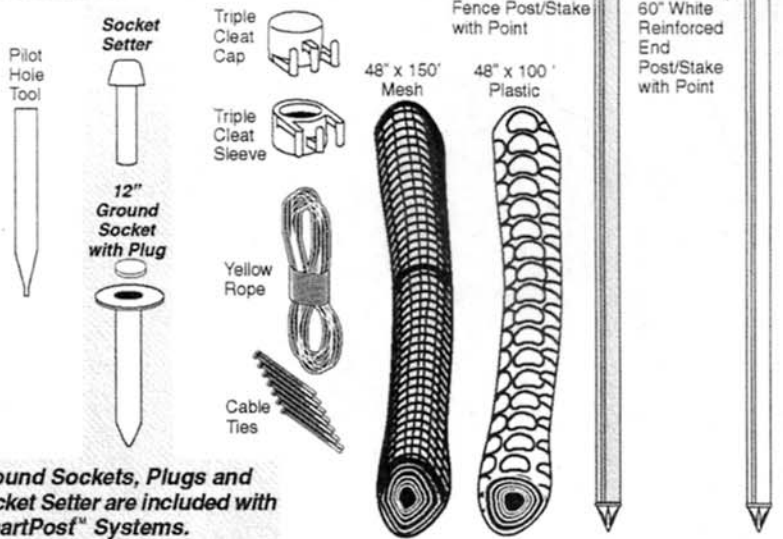
150 ft. Mesh Fencing Kits include:
 16 poles, each with 1 cap, 2 sleeves,
 (2 white reinforced end posts and 14 black posts)
 150 ft. of Mesh Fencing Rope & 50 Cable Ties
 1 Pilot Hole Tool

1 Socket Setter
16 Ground Sockets with Plugs

100 ft. Plastic Fencing Kits include:
 11 poles, each with 1 cap, 2 sleeves
 (2 white reinforced end posts and 9 black posts)
 100 ft. of Plastic Fencing Rope & 30 Cable Ties
 1 Pilot Hole Tool

1 Socket Setter
11 Ground Sockets with Plugs

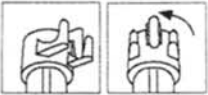
Ground Sockets, Plugs and Socket Setter are included with SmartPost™ Systems.



Fence Post Assembly

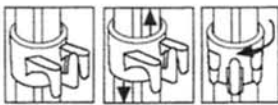
We suggest that gloves be worn when sliding Tri-Cleat™ sleeves in place along the shaft of the posts or stakes. There can be a lot of friction and heat in this assembly process.

Caps

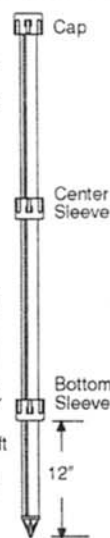


Place Cap on pole and twist sleeve 30° to left to create friction lock with pole ribbing.

Sleeves



Hold Triple Cleat™ Sleeve on top of pole with center cleat to right of pole rib. Slide sleeve to desired height. Twist sleeve 30° to left to create friction lock with pole ribbing. To readjust location, twist sleeve to right, slide and twist left. *Note: Sleeves should be installed with 2 points down as shown.*



Creating Pilot Holes

Drive Installation Tool into ground with hammer or rubber mallet.

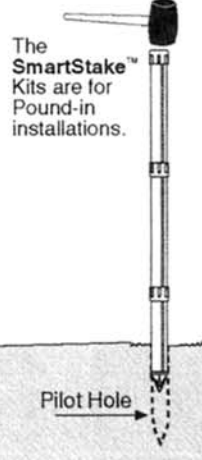
Gently tap Installation Tool from right to left to loosen & remove from ground.

Hint:
 For Faster Work,
 Drill Pilot Hole using our optional Auger - 1" dia. x 10" deep.
 Light pressure on Auger aids soil removal.

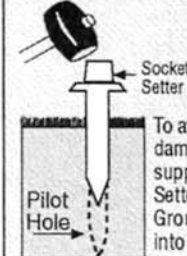


Installing SmartStakes™

The SmartStake™ Kits are for Pound-in installations.



Installing SmartPosts™ with Ground Sockets

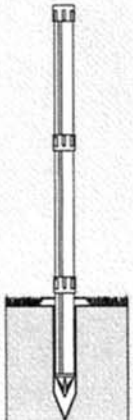


To avoid socket damage, use the supplied Socket Setter and drive Ground Socket into the ground.

Make sure the Socket is flush with the turf line.

Insert SmartPost™

The SmartPost™ kits are for Ground Socket installations.

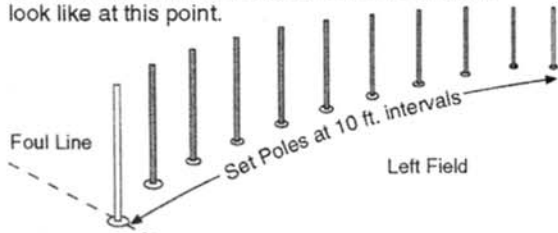


Outfield/Utility Fencing Field Layout Suggestions

1. Use a line anchored at home plate for curve reference. Start at the Foul Line and measure off and mark all Ground Socket locations 10 feet apart.
2. If you are using the SmartPost™ Kits: Create pilot holes and install all Ground Sockets into marked locations. See Ground Socket instruction details. Assemble and insert all posts into sockets.

2a. If you are using the SmartStake™ Kits: Create pilot holes, then assemble and insert all stakes into ground at marked locations.

3. This is what a 100 ft. section in left field should look like at this point.



4. See fence installation instructions. Remember to slide the Sleeves as needed to tighten or loosen Fence fabric. Make sure the bottom of fence fabric is secure at Ground level.

Note: Gateways can be used for any application, such as snow fence or crowd control, to provide easy exit & entry and to avoid fencing damage.

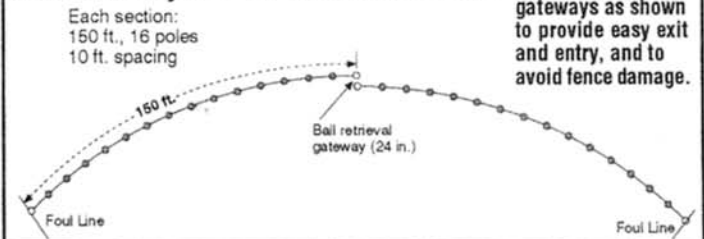
Choose one of these layouts for your outfield.

(Your kit will determine which layout to use.)

Based upon your specific needs, 2,3, or more fence systems may be required.

2 Section Layout - for Mesh Fence Kits

Each section:
 150 ft., 16 poles
 10 ft. spacing

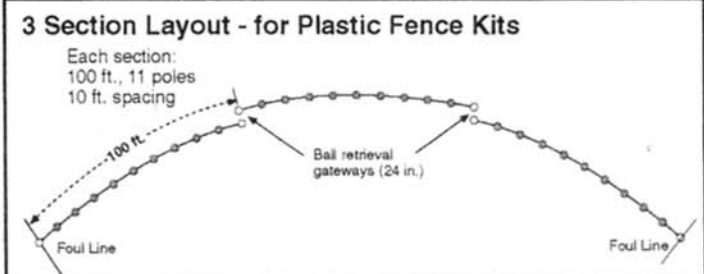


We recommend gateways as shown to provide easy exit and entry, and to avoid fence damage.

Typical 300 ft. Fence Layouts

3 Section Layout - for Plastic Fence Kits

Each section:
 100 ft., 11 poles
 10 ft. spacing



To calculate Fencing required; multiply Foul Line distance by 1.57.
 Example: 180 ft. Foul Line x 1.57 = 282.6 ft.