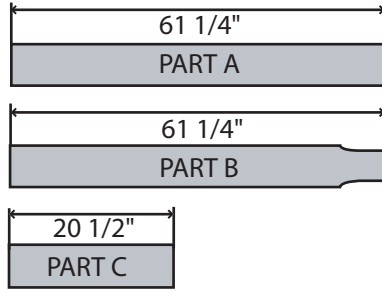


INSTALLATION INSTRUCTIONS

10' x 10' Rebounder Assembly

Parts List:



Tubing:

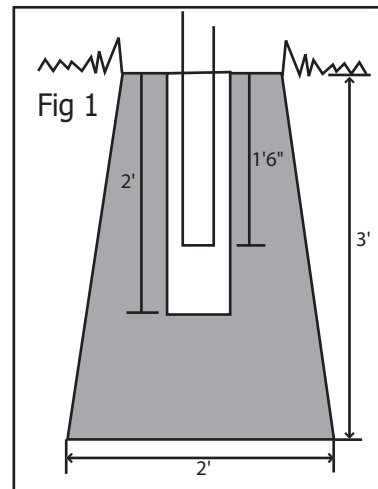
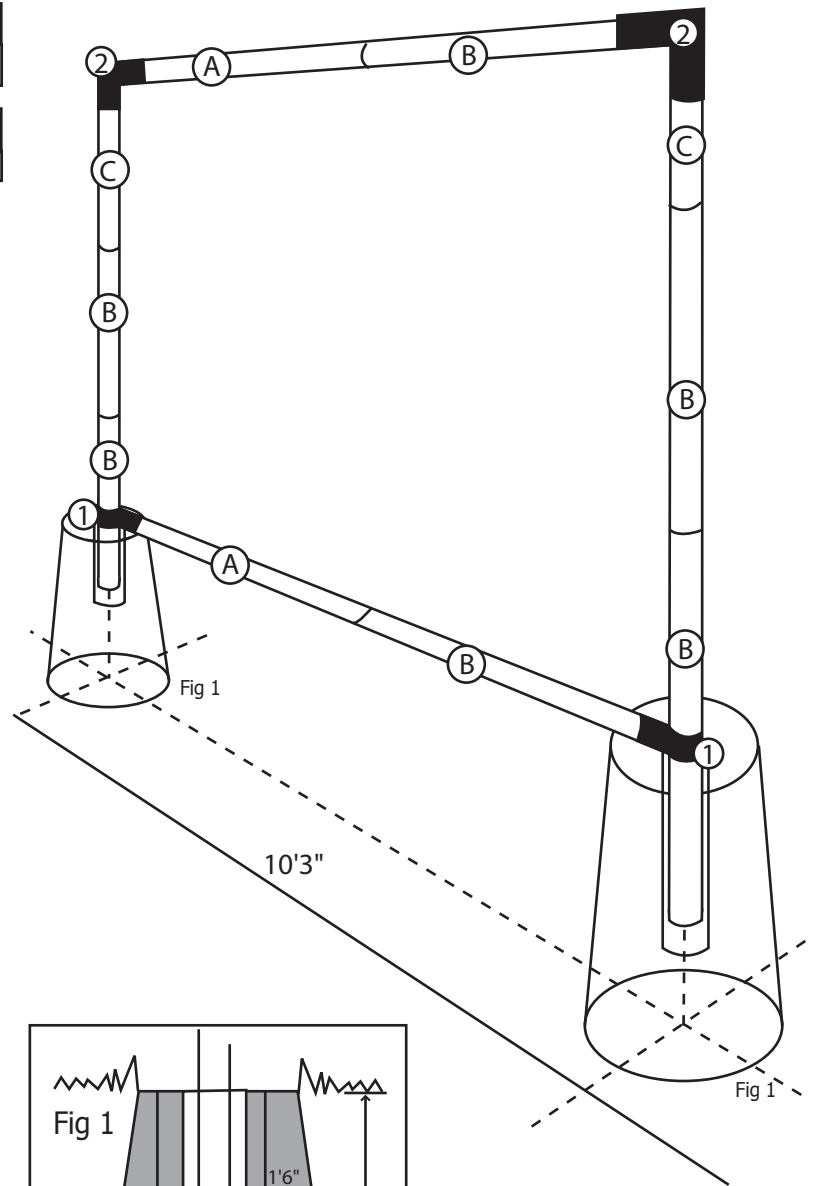
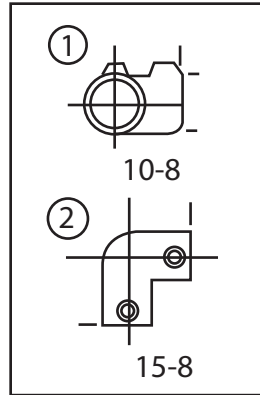
- 2 Part A
- 6 Part B
- 2 Part C

Fittings:

- 2 10-8 Kee Klamp (1)
- 2 15-8 Kee Klamp (2)

Others:

- 2 2" i.d. PVC sleeves
- 1 Rebound Net
- 1 Vinyl Skirt
- 6 Releasable Ty-Raps
- 1 Webbing Strap
- 1 Set Screw Key
- 20 Bungee Cords
- 10 Adjustable Straps



1. Sink PVC sleeves to a depth of 2 ft. in concrete at least 3 ft deep, as shown on the illustration.
2. Assemble bottom bar over the holes as a guide. Lift off, lay down and finish assembly of frame on the ground. Use a set screw key to secure poles in fittings. Be sure the whole frame is assembled before installing the netting
3. To install netting, fasten frame along sides and top using bungee cords, hook every 8 mesh. Put tension on netting using 10 adjustable straps spaced evenly along the bottom.
4. Attach vinyl skirt at bottom using ty-raps. Thread webbing into netting at 3ft. height to simulate tennis net height