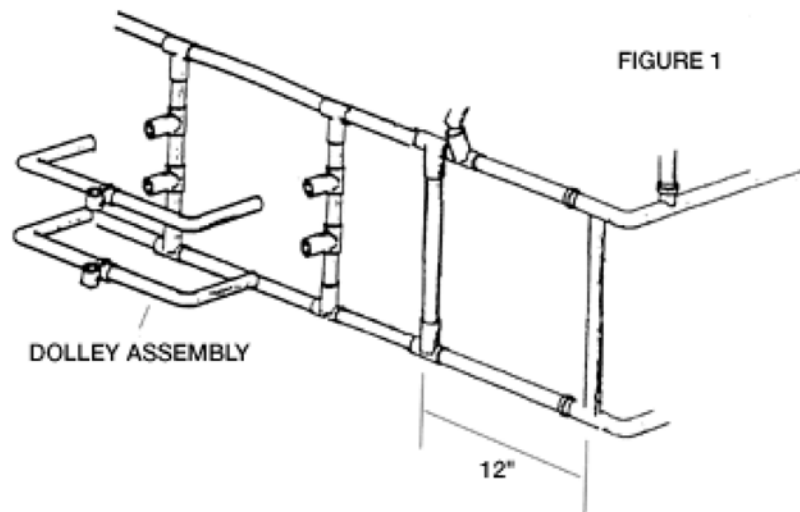


# Portable Batting Cage (36600) non-folding

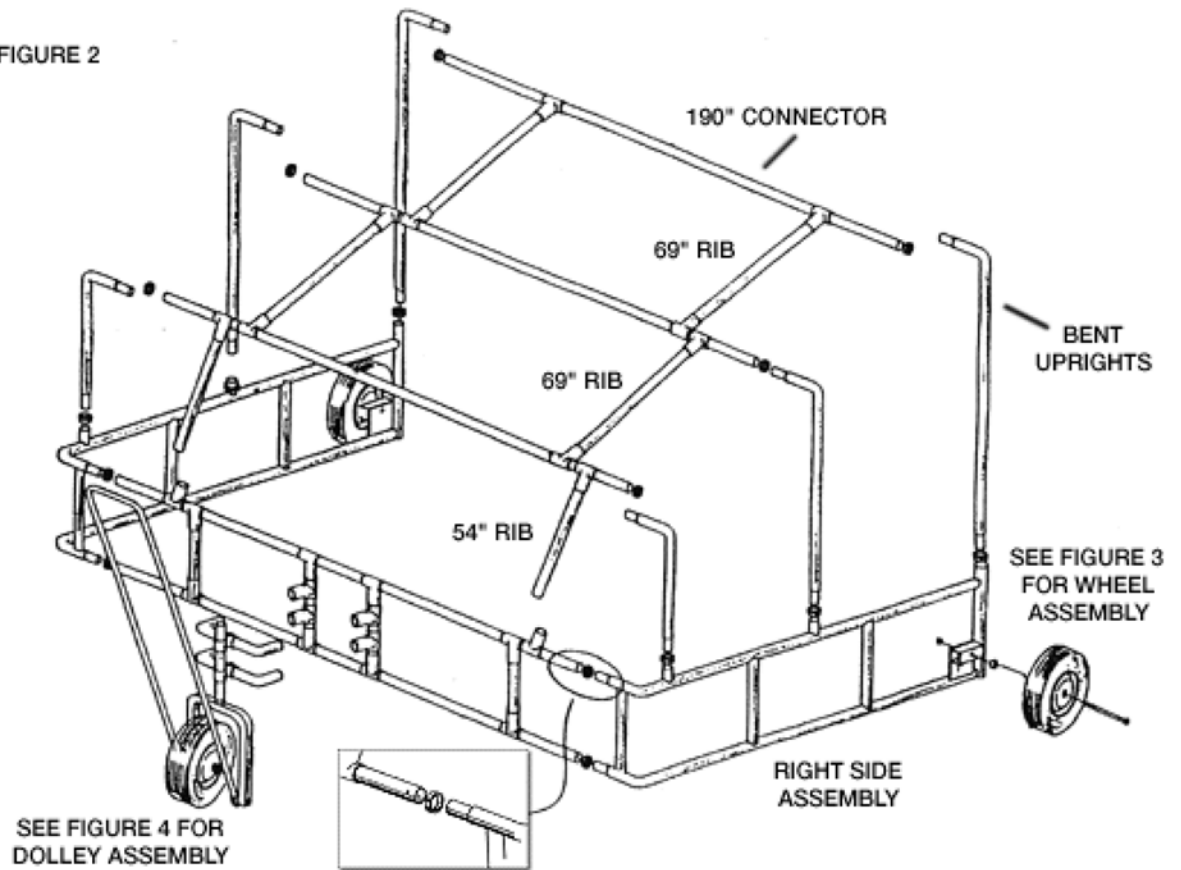
**You should receive the following with your BS4000:**

- 1 - RIGHT SIDE FRAME
- 1 - LEFT SIDE FRAME
- 1 - DOLLEY ASSEMBLY
- 1 - BUNDLE OF 5: 190" CONNECTOR TUBES
- 1 - BUNDLE OF 6: BENT UPRIGHTS
- 1 - BUNDLE OF 6: RIBS
- 1 - BOX OF FOUR 32" TUBING (SHIPS UPS)
- 1 - HARDWARE BOX (SHIPS UPS)
- 1 - BATTING CAGE NET



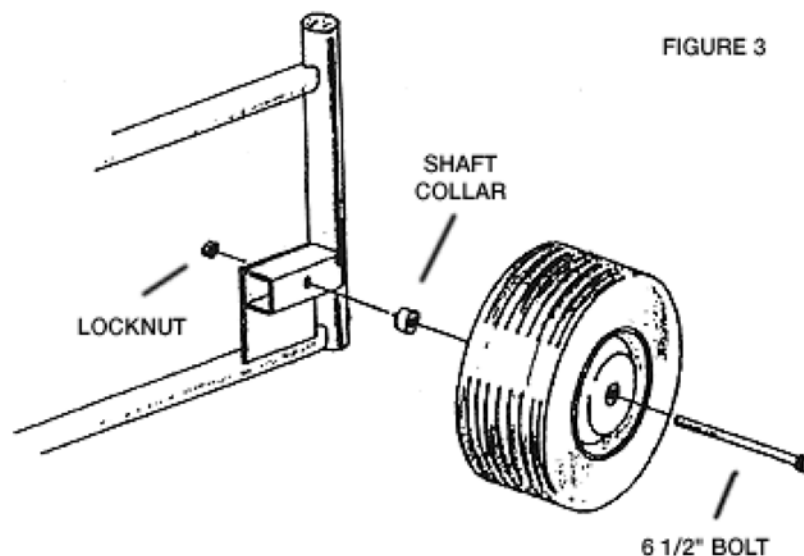
1. Assemble the Back Assembly using two 190" tubes and four 32" tubes and "T" fittings as shown in Figure 1. Place two 32" tubes approximately 12" from each end and center the tubes for the drolley assembly. Please refer to Figure 1.

FIGURE 2



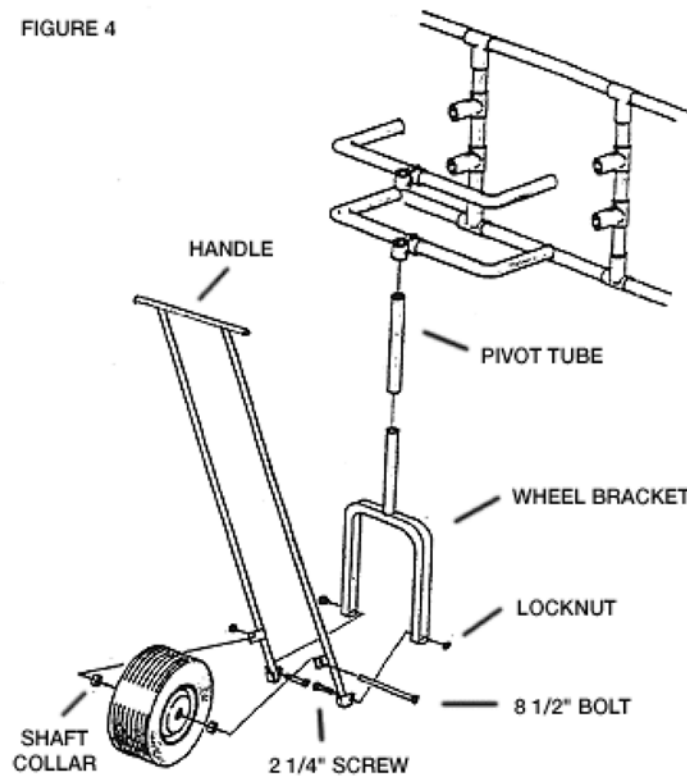
2. Position the Back Assembly, Right Side Assembly and Left Side Assembly as shown in Figure 2. Slide a Locking Collar on each end of the Back Assembly and slip the Side Assemblies in place.

FIGURE 3



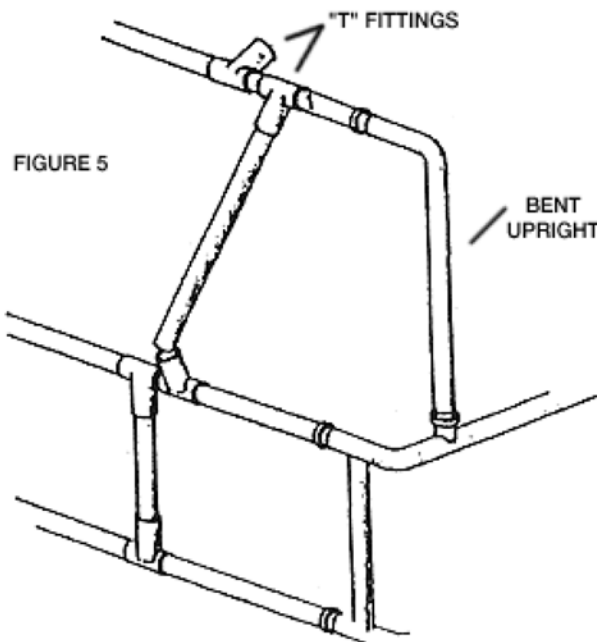
3. With the lower portion of the Backstop now assembled, install the Wheels by inserting an 6 1/2" Hex Bolt in through the Wheel. Slide a Shaft Collar on the bolt and insert through the Wheel Mounting Bracket on Side Assembly as shown below. Screw the Locknut onto the Bolt until the Bolt tip is flush with the Locknut. Lock down the Shaft Collar against the Mounting Bracket. Refer to Figure 3.

FIGURE 4



4. Assemble the Dolley by adjusting the height of the Pivot Tube with the Handle in the upright position and the bottom rail of the backstop sitting on the ground. Refer to Figure 4.

5. Assemble the Upper Portion of the Backstop using three 190" Connector tubes and six variable length bent Uprights as shown on Figure 2. Slide 4 "T" fittings on the rear and center Connectors and 2 "T" fittings on the front Connector. Put a Locking Collar on both ends of each Connector and attach the Uprights to them. Tighten Locking Collars in place.



6. Place a Locking Collar on each of the connecting points on the Side Assemblies. With assistance, I

the Upright/Connector assemblies upon the lower assembly. Now lock in place.

7. Assemble the Ribs (See Figure 5) by inserting one end into a “T” Fitting, and line it up to the corresponding “T” Fitting and push until it snaps in place. Tighten set screws on all “T” Fittings.

8. With all the parts in place, go back and make sure all fittings are properly tightened.

9. When installing net, hang on the inside of the cage using the included tie wraps. Make sure that the baffle net (double netting) hangs loose behind the batter.

