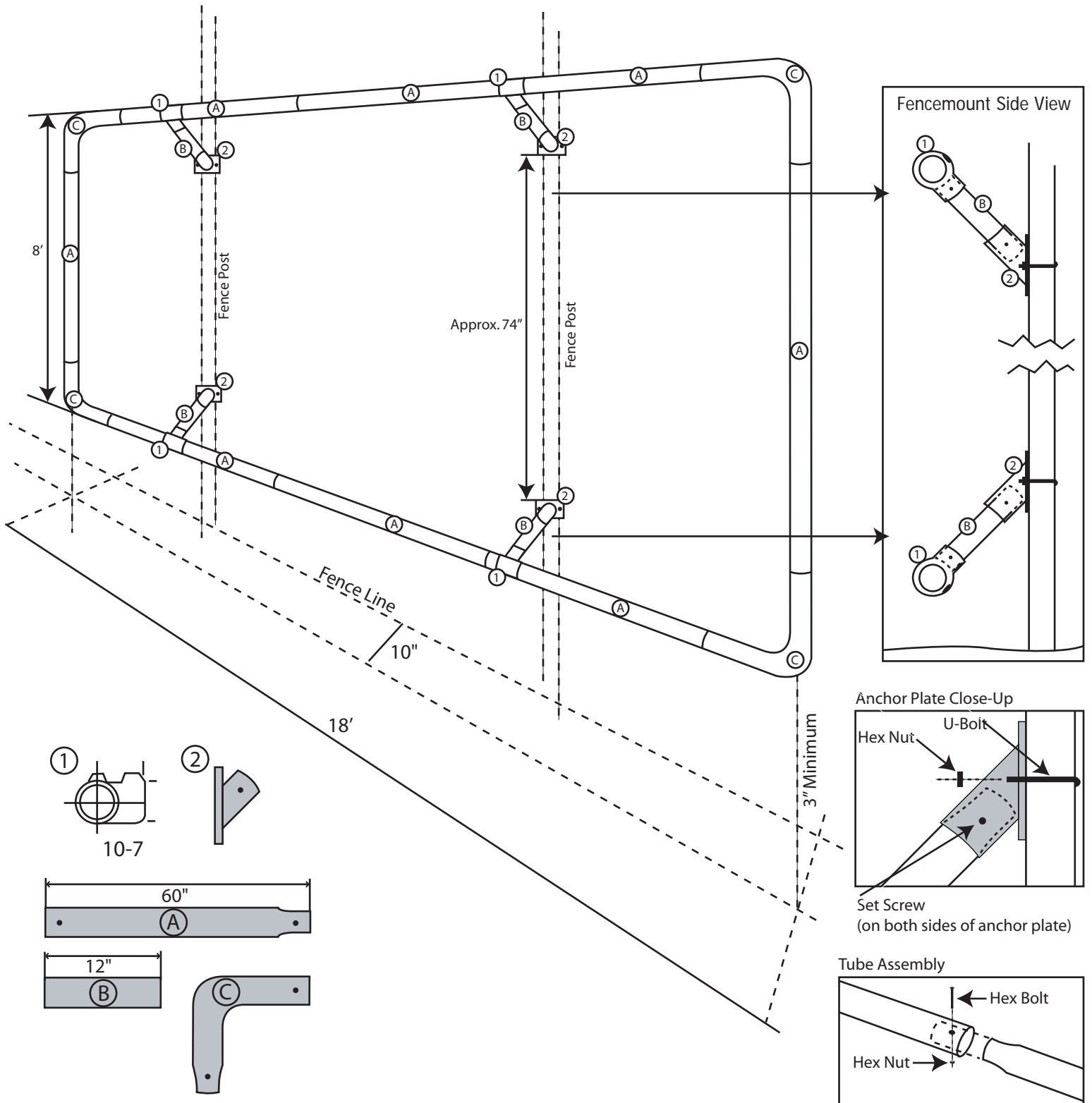


INSTALLATION INSTRUCTIONS

Fence Mount Rebounder



INSTALLATION INSTRUCTIONS

Fence Mount Rebounder

Parts List:

Tubing:

8 60" (A)
4 12" Braces (B)
4 Elbows (C)

Fittings:

4 10-7 Kee Klamp (1)
4 Anchor Plates (2)

Others:

1	Rebound Net	1	Set Screw Key
28	Bungee Cords	4	U Bolts
1	Webbing Strap	12	Hex Bolts
8	Set Screws	12	Nylon Hex Nuts

1. Lay out the main rectangular frame on the ground, do not assemble the pieces.
2. On the top and bottom of the frame, slide on two 10-7 kee-klamps (part 1). Do not tighten these pieces down, allow them to float freely.
3. Measure the distance between your fence posts, this will be the location of the kee-klamps.
4. Assemble main rectangular frame flat on the ground by sliding the eight 60" tubes (part A) together with the four elbows (part c). Position the kee-klamps based on your fence post dimension. Do not tighten the kee-klamps.
5. Insert 12 Hex head bolts in the holes. Do not tighten the bolts until all of the bolts are in installed. Once the frame is one piece, tighten the hex bolts. Allow the kee-klamps to remain free.
6. Locate the anchor plates on the fence post with approximately 74" between the two plates. Using the U-bolts mount the top two plates with the tube facing upwards and the bottom two plates facing down.
7. Insert 12" spacer tubes in all four anchor plates and tighten the set screws on all four plates.
8. Lean the main rectangular frame against the fence in an upright position.
9. With a ladder at each fence post, slowly raise the frame up to the top mounting brackets, inserting the kee-klamp on to each spacer tube.
10. Make sure the tube is set all of the way into the bottom of the kee-klamp.
11. Repeat the procedure on the bottom anchor plates, there should be enough flex in the frame to locate the kee-klamps.
12. Measure from the kee-klamps to the outside edge of the frame in both directions, making sure that the dimensions are the same.
13. Tighten all bolts on the frame, kee-klamps, spacer tubes and mounting brackets.
14. Install net with 9 bungees across the top and 9 across the bottom evenly spaced and 5 on each side.
Note: Start with one in each corner.
15. Install white webbing 36" from the ground, weave webbing through the net.