



LITCHFIELD, IL USA

HOLLYWOOD BASES®

CARE AND MAINTENANCE TIPS

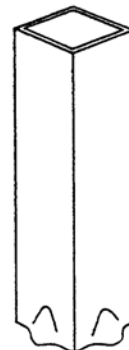
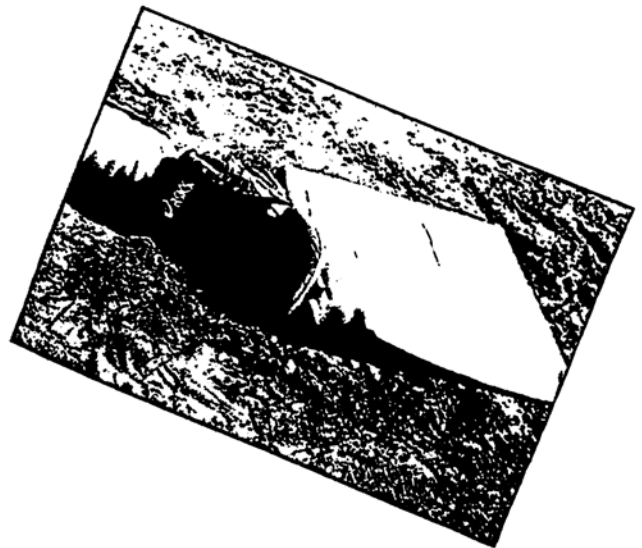
The **HOLLYWOOD® IMPACT** is the newest base on the market - a revolutionary new base that reduces the chance of injury. The safety features of the **HOLLYWOOD® IMPACT** include a honeycomb design which compresses inward and downward into the dirt as the runner slides into the base, which also minimizes the possibility of injury to the runner. Our ground anchors are 8" long, with the stanchion posts 5 3/4" from the bottom of the base. The ground anchors should be at least 1" below the playing surface. Consequently, there should be at least 3 1/4" clearance between the bottom of the stanchion post and the bottom of the ground anchor. This clearance allows the base to give when stepped on from the top. In fact, the fit between the two tubes is close enough that they interact like an air shock. **IMPORTANT: THE HOLLYWOOD® IMPACT MUST BE FLAT ON THE GROUND FOR THE BASE TO FUNCTION PROPERLY.** Made of a high-quality rubber compound, the **HOLLYWOOD® IMPACT** is a permanently white and durable base which stands up well under adverse weather conditions. Available in recreation and pro models, the **HOLLYWOOD® IMPACT** could soon become the standard for all levels of play! We, the manufacturers of the **HOLLYWOOD® IMPACT**, ask that you pay special attention to the installation instructions when placing the bases in your field. In order to receive the greatest percentage of financial, as well as performance benefits from the **HOLLYWOOD® IMPACT**, we offer the following care and maintenance tips for you.

1. **The ground anchoring system** is the key to success with the **HOLLYWOOD® IMPACT**. Follow the instructions carefully when placing the bases. This will ensure that the anchor sleeve is straight and **will allow the base to lay flat on the ground.**
2. **Keep the ground anchor clean!** The ground anchor plug helps to keep the anchor free of debris and also sets the level of the field around the base area. When properly installed, only the tip of the plug will show when the dirt is packed around the top of it. It can stay in the ground at all times that the bases are not installed. The plug may also be left in place on multipurpose fields while one base location is being used. See illustration. We have developed a Dig-Out Tool for use in cleaning the ground anchor sleeve and manicuring the field prior to, or during the game.
3. **If the ground anchor is not cleaned,** it may partly fill up with dirt and the stanchion tube may then be forced into it by inexperienced grounds personnel. Some may even jump onto the base to force the tube into the dirty ground anchor. This tends to weaken the area around the top of the tube and may eventually lead to an unsafe or unusable base.

4. **If the above practice has taken place,** extra unnecessary strain is then put on the base upon removal from the ground anchor. If it is twisted or pried loose from the compacted anchor, the result may be torn rubber covers at the junction of the anchor tube.
5. **Use a standard household cleaner** to assist in cleaning the **HOLLYWOOD® IMPACT**. Simply spray on and wipe off with a damp cloth or sponge. In most cases, a rinsing by hose is not necessary. If, however, moisture does accumulate on or in the base, due either to atmospheric conditions, watering of grounds, or cleaning, store your base leaning on the tube, or hanging, tube side down, from a bar rack.

90 day manufacturers' warranty against defective parts and materials.

WARNING: SCHUTT SPORTS ADVISES THAT SLIDING INTO A BASEBALL BASE REPRESENTS A CLEAR AND PRESENT HAZARD. INJURY MAY RESULT.



BBP-4
GROUND
ANCHOR



BBP-6 GROUND
ANCHOR PLUG
(RUBBER)
FOR GREATER
VISIBILITY
AND DURABILITY